

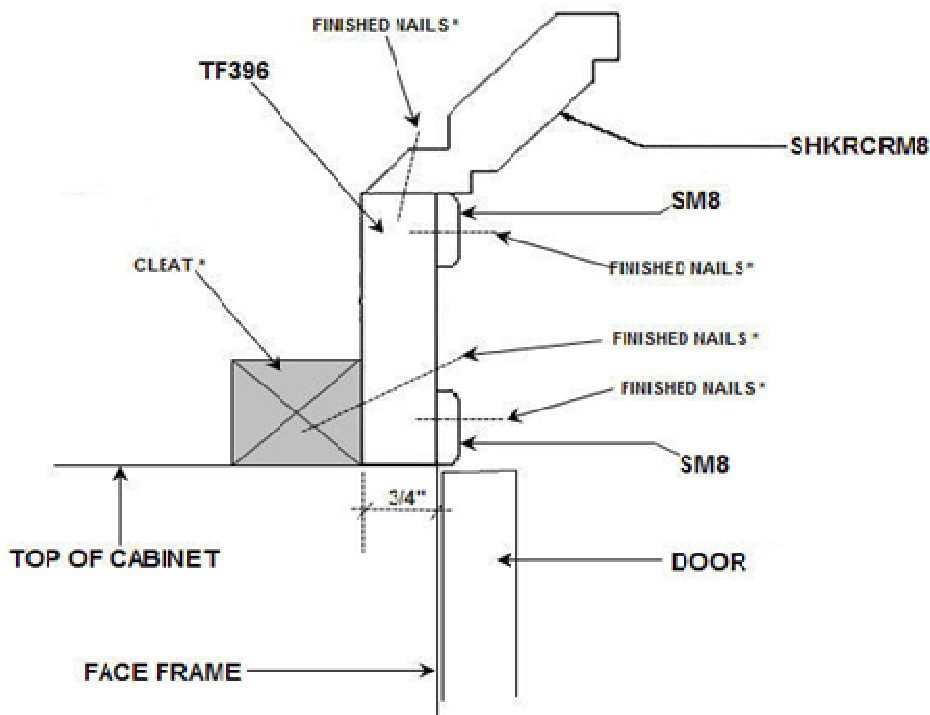
**INSTALLATION NOTES:**

**IT IS RECOMMENDED TO PRE DRILL HOLES WHEN ATTACHING THE TRIM AS TO AVOID SPLITTING ANY OF THE MOLDING. USE FINISH NAILS & GLUE. (RENTING A BRAD GUN IS A GOOD IDEA AND YOU WON'T NEED TO PRE-DRILL HOLES.)**

**TOTAL STACK HEIGHT: 5"**

**INSTALL WALL TO WALL:**

1. INSTALL CLEAT 3/4" BACK FROM FACE FRAME (CUT TO SIZE.)
2. INSTALL TF396 TO TOP OF CABINET (CUT TO SIZE.)
3. APPLY CROWN MOLDING (SHKRCRM8 ) ON TOP OF TF396 (CUT TO SIZE.)
4. ATTACH (BOTH - SM8) TO TF396 (CUT TO SIZE.)



\* SUPPLIED BY OTHERS.