

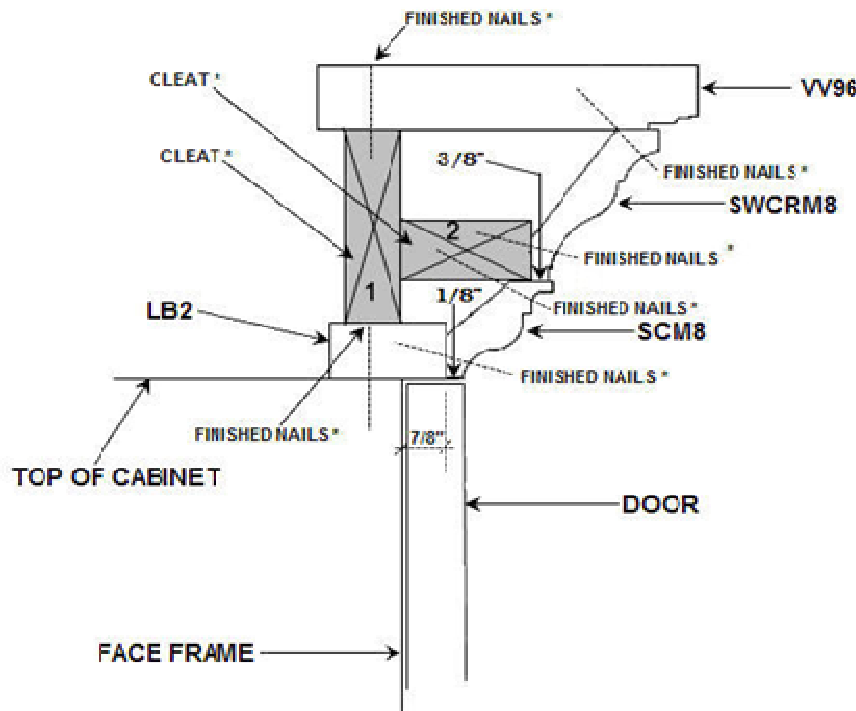
**INSTALLATION NOTES:**

**IT IS RECOMMENDED TO PRE DRILL HOLES WHEN ATTACHING THE TRIM AS TO AVOID SPLITTING ANY OF THE MOLDING. USE FINISH NAILS & GLUE. (RENTING A BRAD GUN IS A GOOD IDEA AND YOU WON'T NEED TO PRE-DRILL HOLES.)**

**TOTAL STACK HEIGHT: 3-6/8"**

**INSTALL WALL TO WALL:**

1. INSTALL (LB2) ON TOP OF CABINET AND PULL OUT LB2 7/8" FROM FACE FRAME (CUT TO SIZE.)
2. ATTACH SMALL CROWN MOLDING (SCM8) TO LB2 (CUT TO SIZE.)
3. INSTALL CLEAT #1 FLUSH WITH FACE FRAME (CUT TO SIZE.)
4. ATTACH CLEAT #2. NOTE! TO FIGURE OUT SIZE OF CLEAT, SWCRM8 NEEDS TO SIT BACK 1/16" ON TOP OF SCM8 (CUT TO SIZE.)
5. ATTACH (SCM8) TO CLEAT #2 (CUT TO SIZE.)
6. ATTACH CROWN MOLDING (SWCRM8) TO CLEAT #2 (CUT TO SIZE.)
7. ATTACH VV96 (CUT TO SIZE) TO CLEAT #1 & TOP OF CROWN MOLDING (SWCRM8.) LET THE FRONT OF VV96 COME OUT A 1/2" PAST THE TOP OF SWCRM8.



\* SUPPLIED BY OTHERS.