

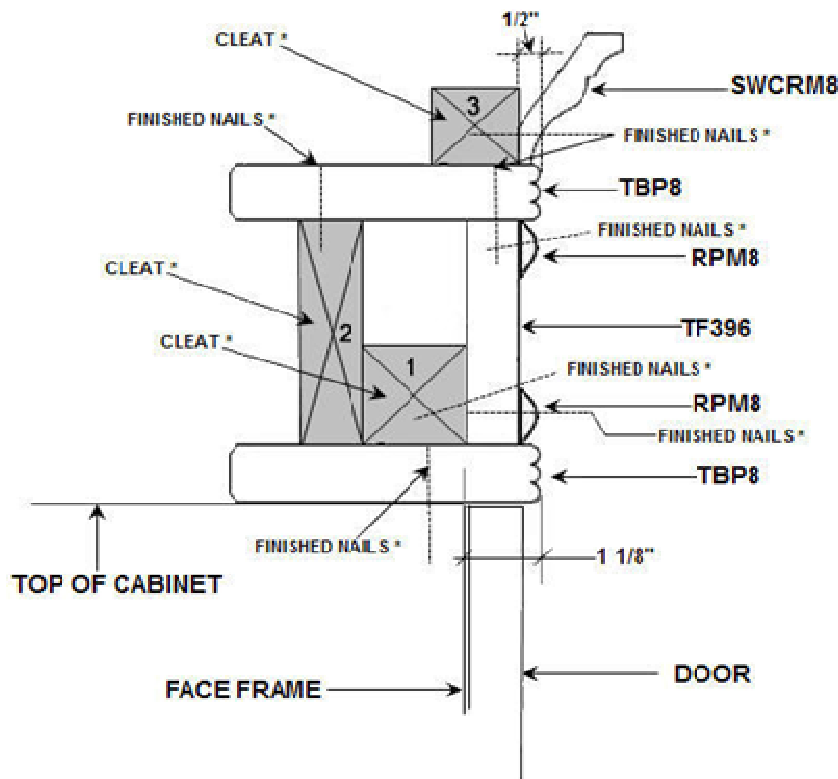
INSTALLATION NOTES:

IT IS RECOMMENDED TO PRE DRILL HOLES WHEN ATTACHING THE TRIM AS TO AVOID SPLITTING ANY OF THE MOLDING. USE FINISH NAILS & GLUE. (RENTING A BRAD GUN IS A GOOD IDEA AND YOU WON'T NEED TO PRE-DRILL HOLES.)

TOTAL STACK HEIGHT: 6-1/8"

INSTALL WALL TO WALL FIG: 1

1. INSTALL TBP8 ON TOP OF CABINET. PULL OUT 1 1/8" FROM FACE FRAME (CUT TO SIZE.)
2. INSTALL CLEAT #1 – 1 1/8" BACK FROM TBP8 (CUT TO SIZE.)
3. INSTALL CLEAT #2 (CUT TO SIZE.)
4. INSTALL TF396 (CUT TO SIZE.)
5. INSTALL TBP8 ON TOP OF TF396 & CLEAT (CUT TO SIZE.)
6. INSTALL CLEAT #3 (CUT TO SIZE) 1/2" BACK FROM TBP8.
7. INSTALL CROWN MOLDING (SWCRM8) TO CLEAT #3.
8. ATTACH BOTH RPM8 TO TF396 (CUT TO SIZE).



* SUPPLIED BY OTHERS.