

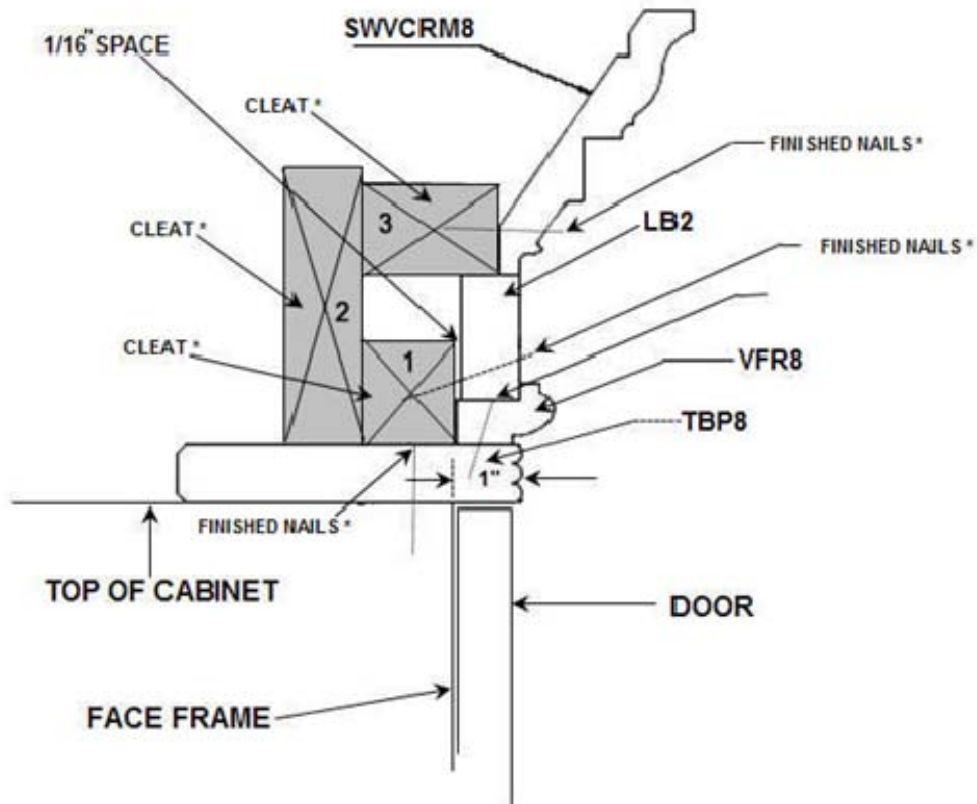
INSTALLATION NOTES:

IT IS RECOMMENDED TO PRE DRILL HOLES WHEN ATTACHING THE TRIM AS TO AVOID SPLITTING ANY OF THE MOLDING. USE FINISH NAILS & GLUE. (RENTING A BRAD GUN IS A GOOD IDEA AND YOU WON'T NEED TO PRE-DRILL HOLES.)

TOTAL STACK HEIGHT: 6-3/16"

INSTALL WALL TO WALL FIG: 1

1. INSTALL TBP8 1" OUT FROM FACE FRAME OF CABINET.
2. INSTALL CLEAT #1 – 1" BACK FROM TBP8 (CUT TO SIZE.)
3. INSTALL (VFR8 TO TOP OF TBP8 (CUT TO SIZE.)
4. INSTALL LB2 (CUT TO SIZE.) NOTE! THERE IS A 1/16" SPACE BETWEEN #1 CLEAT & LB2 (NEEDS TO BE (SHIM): A PIECE OF MATERIAL USED TO FILL IN THE SPACE.)
5. INSTALL CLEAT #2 & # 3 (CUT TO SIZE).
6. ATTACH SWVCRM8 TO CLEAT #3 (CUT TO SIZE).



* SUPPLIED BY OTHERS.